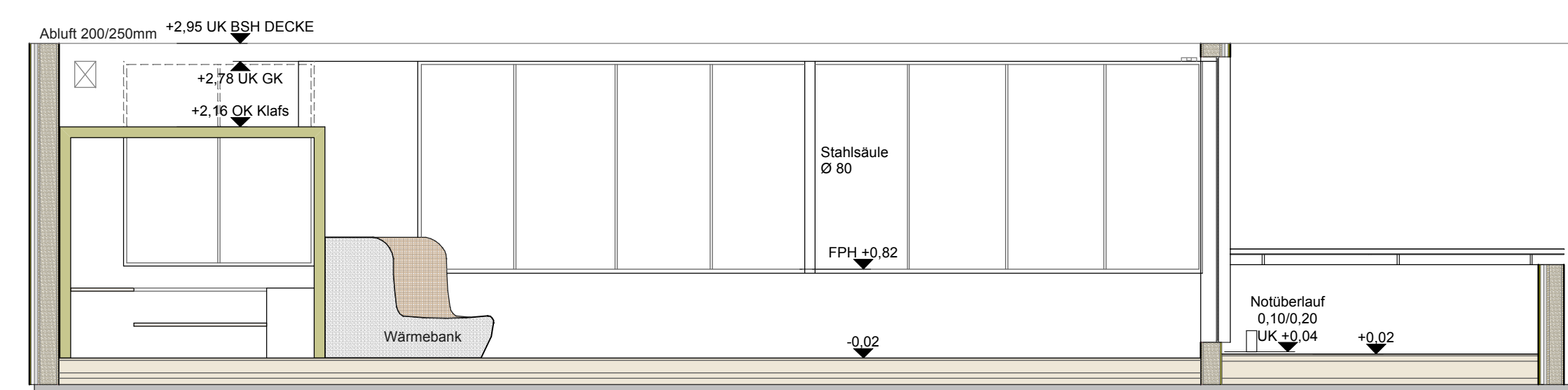
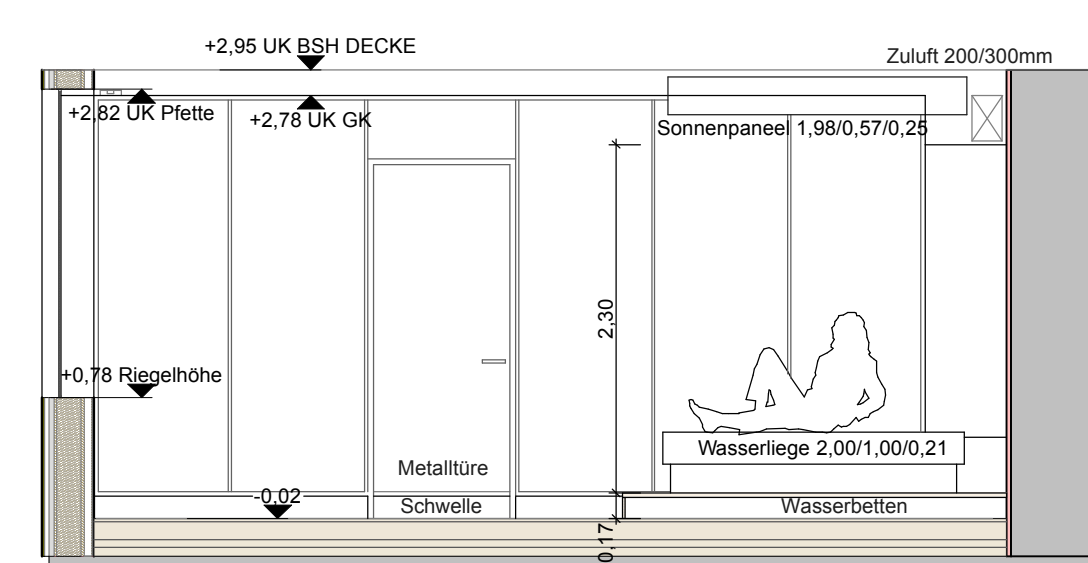


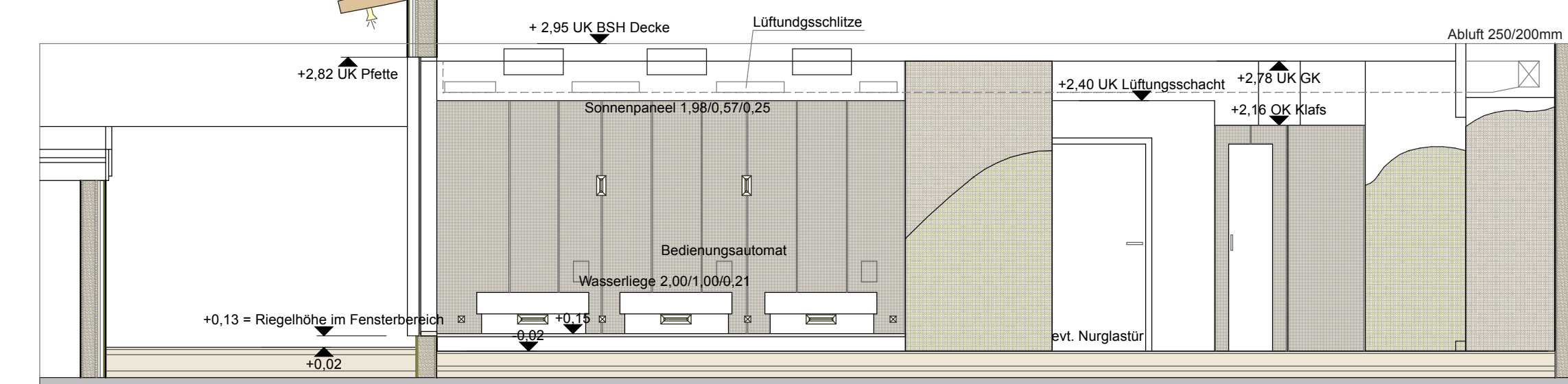
**Wandabwicklung 3 - SÜD**



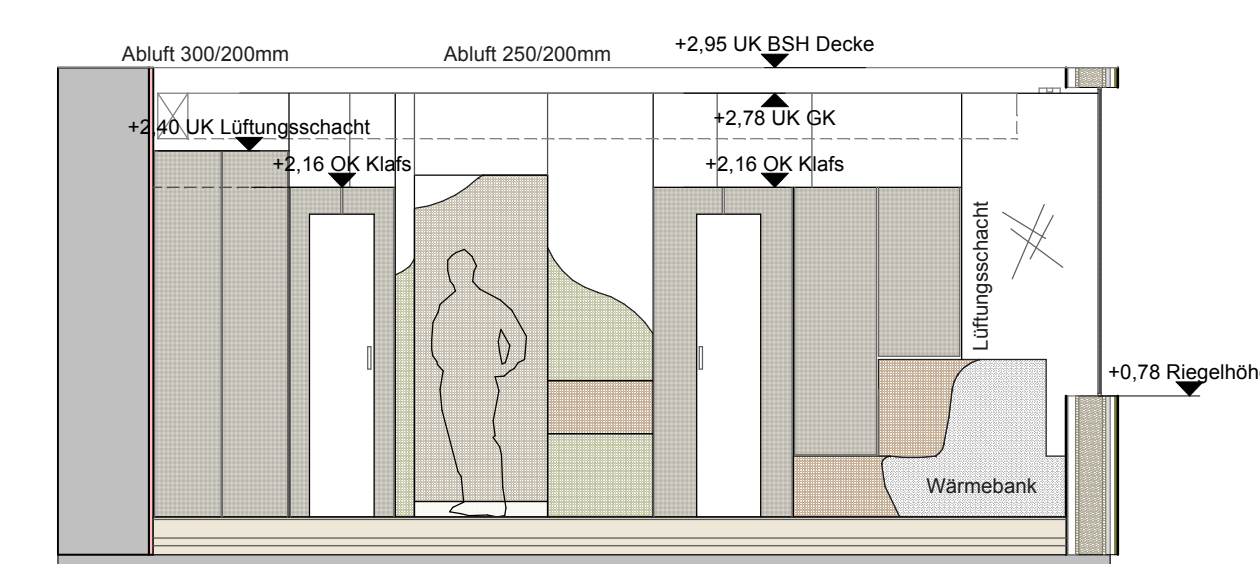
**Wandabwicklung 4 - WEST**



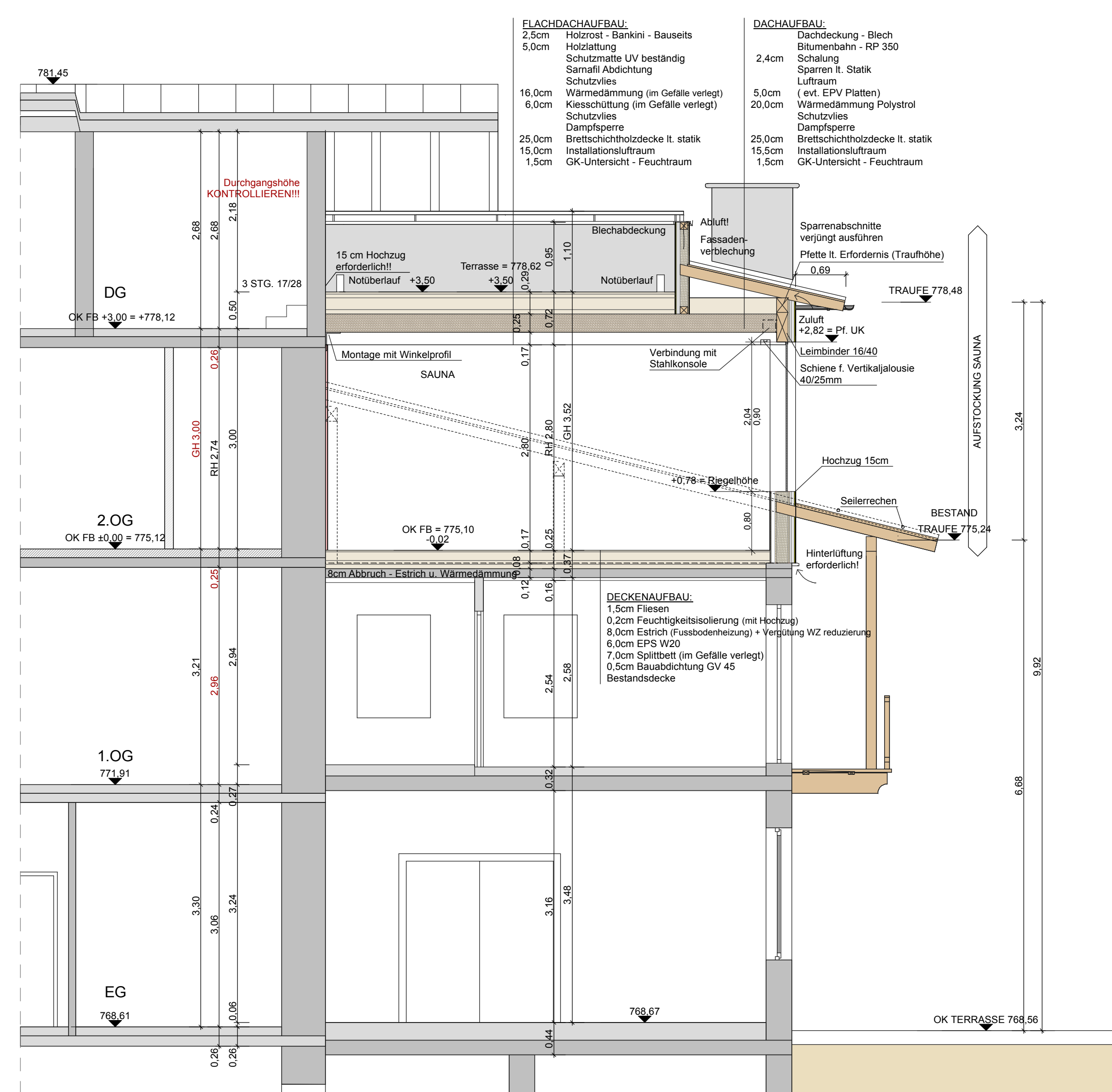
**Wandabwicklung 1**



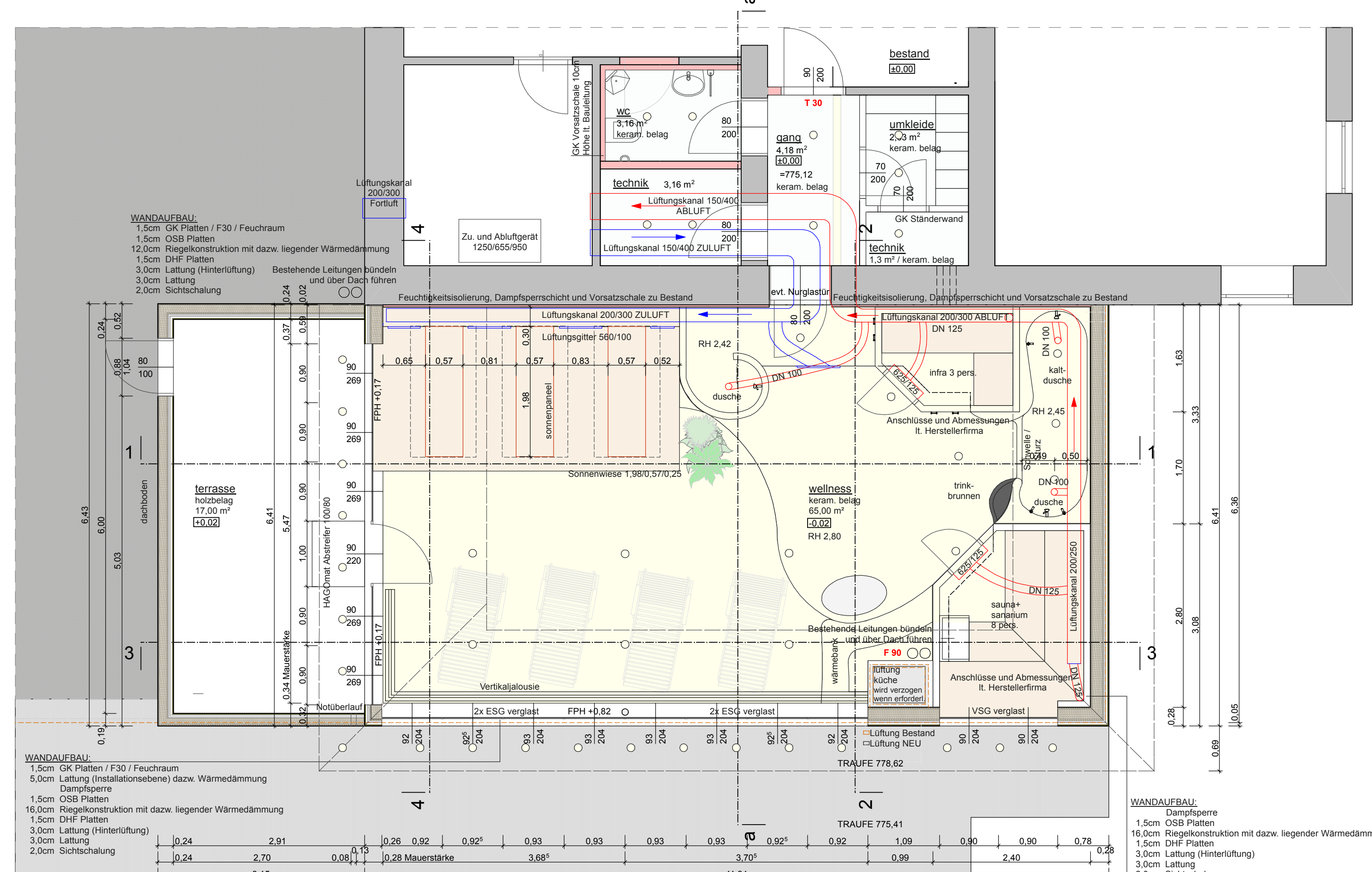
**Wandabwicklung 2 - OST**



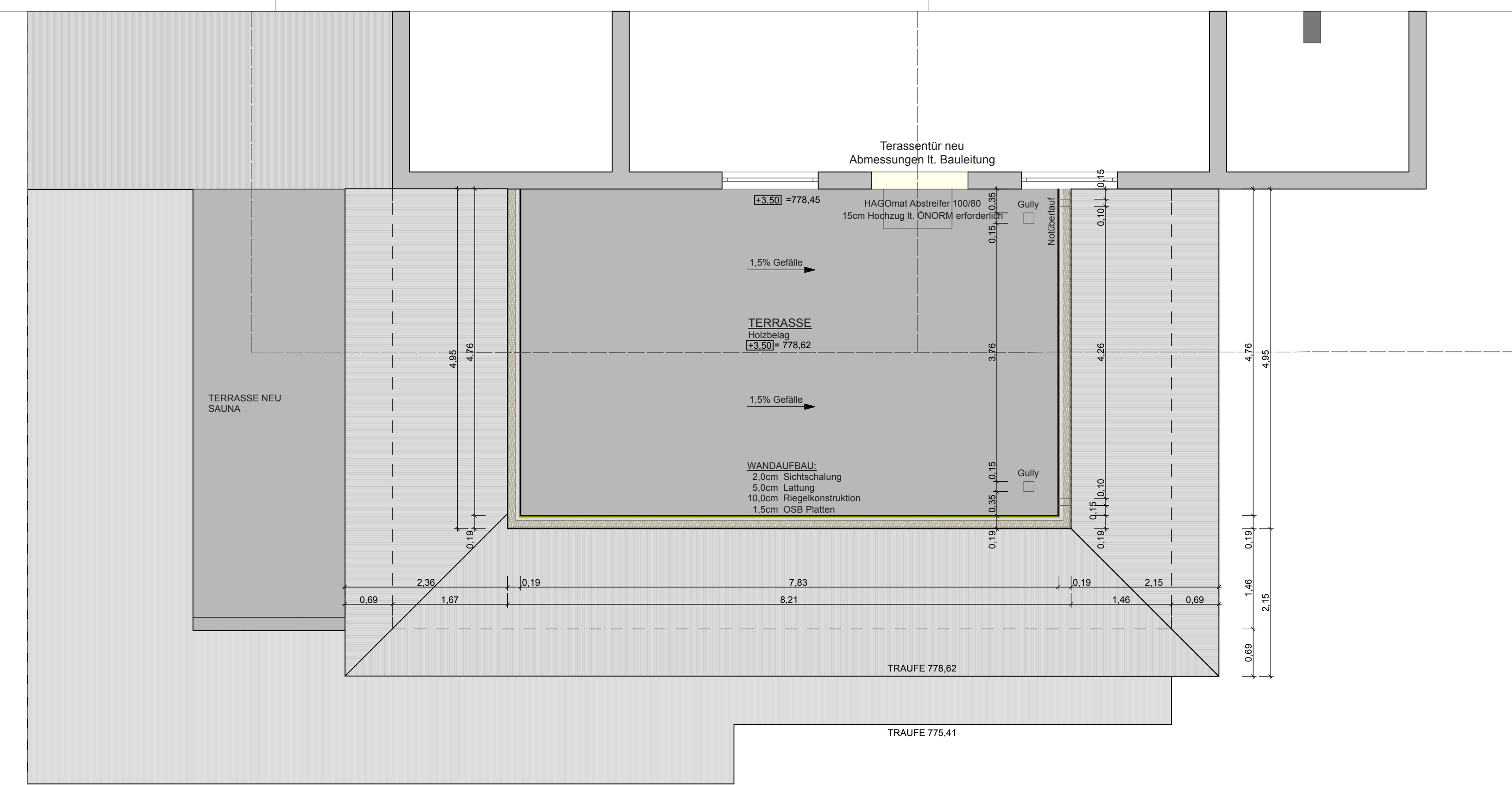
**WANDABWICKLUNGEN**



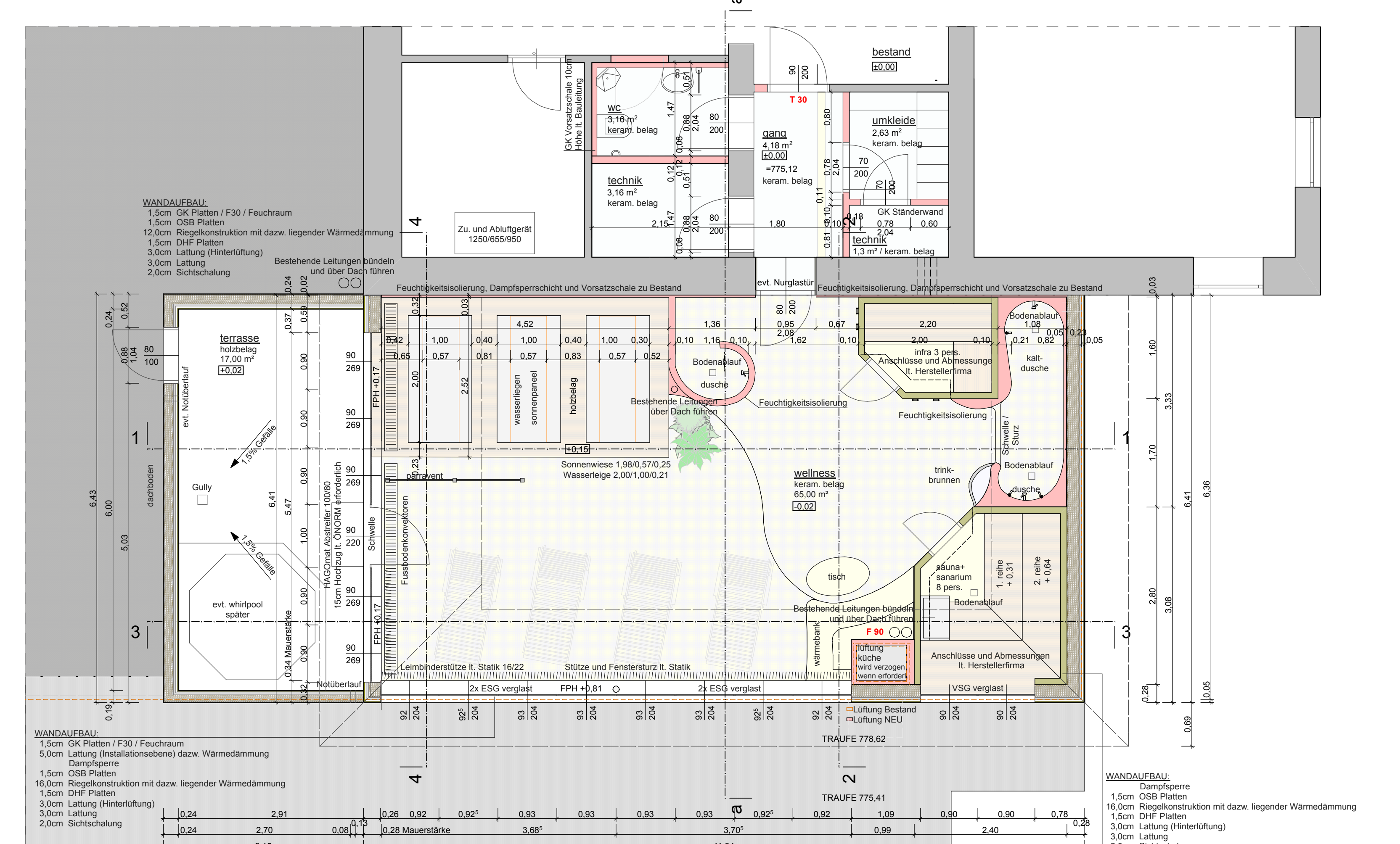
**SCHNITT**



**DECKENPLAN**



**DACHGESCHOSS**



**GRUNDRISS 2.OG**

**VORAUSSPLAN**

**"SAUNA ..."**

Fam. Bruno Falstauer Gasthof Post  
Anton - Falstauer - Platz 1  
5751 Maishofen

**PLANUNGSBÜRO**  
ING. BLANK DIER  
TELEFON: 06442 / 466 876 Fax: 466 877

**WERKPLAN**

Grundrisse 2.OG / Grundrisse 3.OG / Schnitt a-a  
Deckenspiegel / Wandabwicklungen

**LEGENDE:**

- BESTAND
- AUFMASS PLANINGSBURO DICK
- BESTAND
- AUFMASS UND PLAN ATELIER 3
- ABBRUCH
- NEUBAU (Mauerwerk)
- NEUBAU (Holzwerk)
- NEUBAU (Stahl)

**www.dick.at**  
office@dick.at

GEZEHNET: a. hallinger  
DATUM: 18.10.2005  
MASSSTAB: 1:50  
ZEICHNUNGSNUMMER: 005/2004